

# Cynomolgus/Rhesus macaque BCMA/TNFRSF17 Protein

Cat. No. BCM-CM217

## Description

|                         |   |
|-------------------------|---|
| <b>Source</b>           | Recombinant Cynomolgus/Rhesus macaque BCMA/TNFRSF17 Protein is expressed from HEK293 with hFc at the C-Terminus.<br>It contains Met1-Ala53. |
| <b>Accession</b>        | A0A2K5UD97(Cynomolgus) / F7FFA0(Rhesus macaque)   |
| <b>Molecular Weight</b> | The protein has a predicted MW of 31.5 kDa. Due to glycosylation, the protein migrates to 35-45 kDa based on Bis-Tris PAGE result.          |
| <b>Endotoxin</b>        | Less than 1EU per µg by the LAL method.   |
| <b>Purity</b>           | > 95% as determined by Bis-Tris PAGE<br>> 95% as determined by HPLC   |

## Formulation and Storage

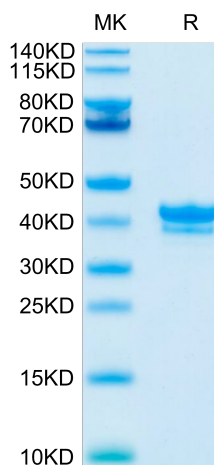
|                       |   |
|-----------------------|---|
| <b>Formulation</b>    | Lyophilized from 0.22µm filtered solution in PBS (pH 7.4). Normally 8% trehalose is added as protectant before lyophilization.  |
| <b>Reconstitution</b> | Centrifuge the tube before opening. Reconstituting to a concentration more than 100 µg/ml is recommended. Dissolve the lyophilized protein in distilled water.  |
| <b>Storage</b>        | -20 to -80°C for 12 months as supplied from date of receipt. -80°C for 3 months after reconstitution. Recommend to aliquot the protein into smaller quantities for optimal storage. Please minimize freeze-thaw cycles. |

## Background

B-cell maturation antigen (BCMA or BCM), also known as tumor necrosis factor receptor superfamily member 17 (TNFRSF17), is a protein that in humans is encoded by the TNFRSF17 gene. TNFRSF17 is a cell surface receptor of the TNF receptor superfamily which recognizes B-cell activating factor (BAFF).

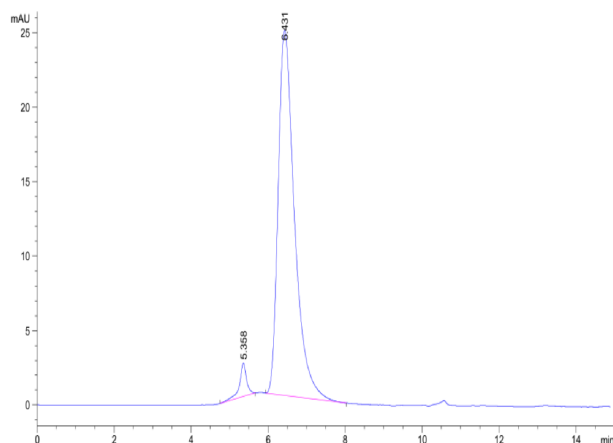
## Assay Data

### Bis-Tris PAGE



Cynomolgus/Rhesus macaque BCMA on Bis-Tris PAGE under reduced condition. The purity is greater than 95%.

### SEC-HPLC

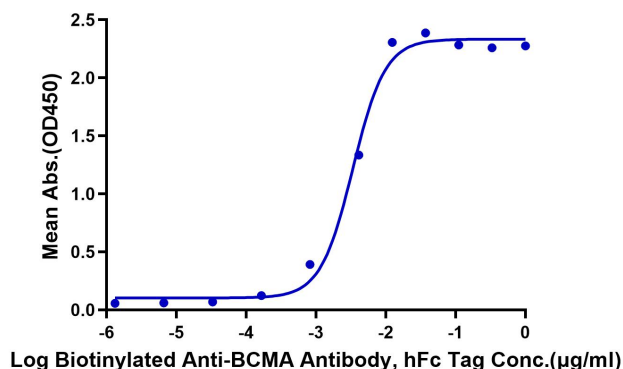


The purity of Cynomolgus/Rhesus macaque BCMA is greater than 95% as determined by SEC-HPLC.

Assay Data

ELISA Data

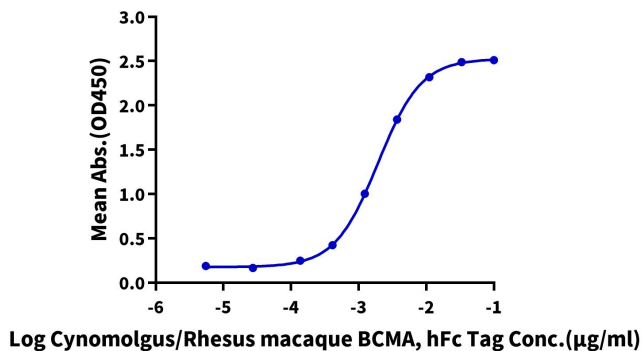
**Cynomolgus BCMA, hFc Tag ELISA**  
0.1µg Cynomolgus BCMA, hFc Tag Per Well



Immobilized Cynomolgus/Rhesus macaque BCMA, hFc Tag at 1µg/ml (100µl/well) on the plate. Dose response curve for Biotinylated Anti-BCMA Antibody, hFc Tag with the EC50 of 9.6ng/ml determined by ELISA.

ELISA Data

**Cynomolgus/Rhesus macaque BCMA, hFc Tag ELISA**  
0.1µg Cynomolgus APRIL (Trimer), His Tag Per Well



Immobilized Cynomolgus APRIL (Trimer) , His Tag at 1µg/ml (100µl/well) on the plate. Dose response curve for Cynomolgus/Rhesus macaque BCMA, hFc Tag with the EC50 of 1.9ng/ml determined by ELISA (QC Test).